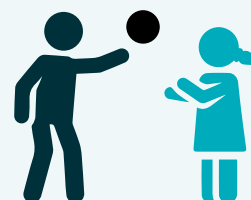


Service Advisory / Governing Committees 2023

School Board of Tak Tin Kindergarten

Ms. Ivy Leung Siu-ling (Supervisor and Chairman)
Ms. Kwong Sau-chee (Vice-chairman)
Ms. Nancy Wong Wai-mui
Mr. Wong Wing-tim
Miss Nora Yau Ho-chun, MH, JP (Member of Board of Directors)
Ms. Regina Wong Pui-yi (Secretary)
Ms. Choi Ning (Principal)



School Board of Cheerland Kindergarten

Ms. Ivy Leung Siu-ling (Supervisor and Chairman)
Ms. Kwong Sau-chee (Vice-chairman)
Ms. Nancy Wong Wai-mui
Mr. Wong Wing-tim
Miss Nora Yau Ho-chun, MH, JP (Member of Board of Directors)
Ms. Regina Wong Pui-yi (Secretary)
Ms. Emily Chan Lai-kwan (Principal)



School Board of Yeoh Choy Wai Haan Memorial Kindergarten

Ms. Ivy Leung Siu-ling (Supervisor and Chairman)
Ms. Kwong Sau-chee (Vice-chairman)
Ms. Nancy Wong Wai-mui
Mr. Wong Wing-tim
Miss Nora Yau Ho-chun, MH, JP (Member of Board of Directors) (Consultant)
Yeoh Choy Wai Haan Trust (Consultant)
Ms. Regina Wong Pui-yi (Secretary)
Ms. Tam Pui-ling (Principal)



Centre Management Committee of Christian Family Service Centre – The Chinese University of Hong Kong Chinese Medicine Clinic cum Training and Research Centre (Kwun Tong District)



Co-Chairman

Ms. Rowena Wong (Chief Manager [Chinese Medicine] of Hospital Authority)

Ms. Ivy Leung Siu-ling (Chief Executive)

Members

Rev. Chan Kwok-keung (Member of Board of Directors)

Dr. Sarah Chan Sze-nga

Mr. Roy Chin Ka-yuen

Dr. Chow Tak-yee

Dr. Hua Heyu

Dr. Martin Lau Chiu-king

Dr. Wong Wei-yin

Mr. Timothy Yung Tsz-ho

Ms. Angel Chan Fung-man (Assistant Chief Executive)

Mr. Gary Kong Ching-yue (Programme Director - Primary Health Care Services)

